

**CANMORE**

Q Search  All


Home About MyCanmore Search Galleries Search Room Enquiries

The online catalogue to Scotland's archaeology, buildings, industrial and maritime heritage

[Learn More](#)


feedback

**Search Site Records**

 Details of over 320,000 buildings, archaeological, industrial and maritime sites across Scotland and beyond.

[Search Sites](#)

**Search Collections**

 Want to search by collection? Discover what we hold. Consult the online catalogue of photographs, drawings and manuscripts and view over 350,000 images.

[Search Archive](#)

[Search Our Thesaurus](#)

[366 Days of Architecture](#)

## Heritage Matters - Recording Scotland's Historic Maritime Environment

Peter McKeague

[peter.mckeague@rcahms.gov.uk](mailto:peter.mckeague@rcahms.gov.uk)



- Leading and enabling
- Investigating and recording
- Protecting and caring
- Sharing and celebrating

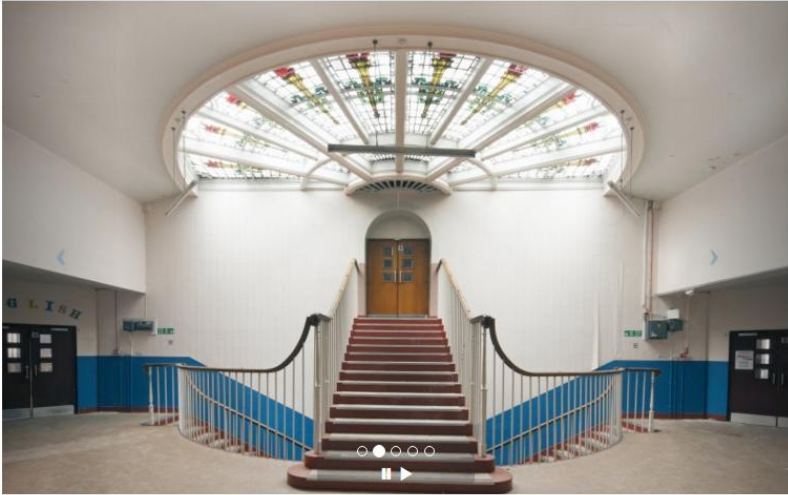
# Canmore: accessing data about the historic environment

(0) (0) Login | Register Accessibility

# CANMORE

Q Search  All

Home About MyCanmore Search Galleries Search Room Enquiries




The online catalogue to Scotland's archaeology, buildings, industrial and maritime heritage

[Learn More](#)

feedback


### Search Site Records



Details of over 320,000 buildings, archaeological, industrial and maritime sites across Scotland and beyond.

[Search Sites](#)

### Search Collections



Want to search by collection? Discover what we hold. Consult the online catalogue of photographs, drawings and manuscripts and view over 350,000 images.

[Search Archive](#)

[Search Our Thesaurus](#)

[366 Days of Architecture](#)

# Canmore: access to the national record of the Historic Environment

Canmore comprises over 320,000 site records and over 1.2million items of associated archive relating to Scotland's archaeological, built and maritime heritage.

Canmore incorporates data from a wide range of sources from antiquarian reports to modern survey. Data is not all verified.

Origin of record based on OS Card Index from 1940s – included a few maritime records

Computerised in 1980s

Maritime record developed from 1995

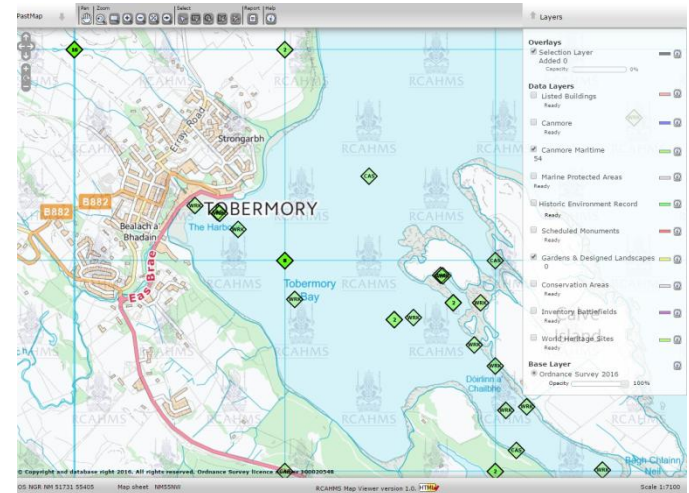
First published online in 1998.

[Project Adair](#) upgrade programme 2011-14

Data now accessible through [Canmore](#), [PastMap](#), [SEWeb](#) and the [National Marine Plan Interactive](#) and as WMS or WFS

Antiquity No.	County	Parish	FN
NM 55 NW 4	ARGYLL (MULL)	KILNINIAN & KILMORE	
Spanish Galleon (Floresca) - sank here 1588			Area: NM 50 9 520
One of the galleons of the Spanish Armada, the Florencia, sheltered in Tobermory Bay in Oct 1588. According to documents in the possession of the Duke of Argyll, in whom is vested the ownership of the wreck, she carried pay chests of the Spanish army which was to have invaded England. On the point of departure from the bay, the ship was damaged by an explosion and sank 300 yds off what is now the New Pier. Attempts to salvage the treasure have been made from time to time, though Sacheverell, Governor of the Isle of Man is reported to have recovered much of the lost bullion on the first salvage expedition in 1688.			1. Isle of Mull 1970 95 (P A MacNab) R1 IF 20.3.72
The New Pier is at NM 507 553. No further information .			F1 DWR 29.4.74

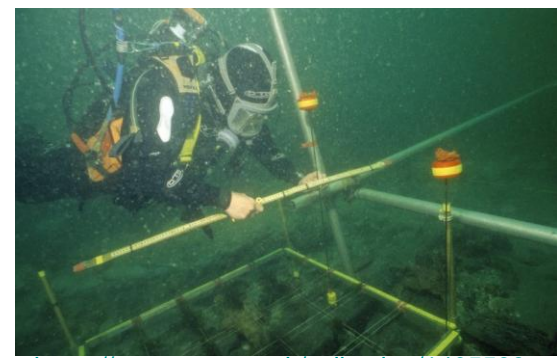
O.S. 495 (6907) D. 614650 24x 489 P.L. Gp. 872



<http://pastmap.org.uk/>

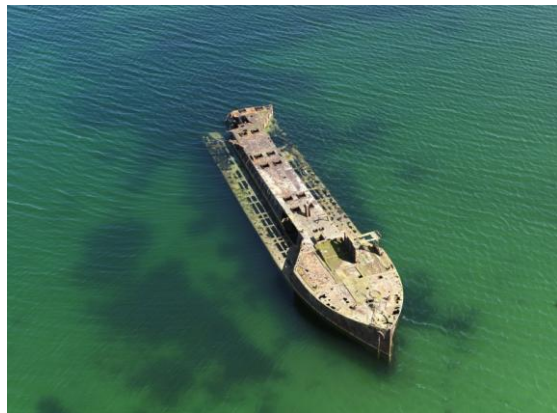
# Canmore: information about wrecks

**There are 4,123 wrecks recorded in Scottish waters**



<https://canmore.org.uk/collection/1405533>

Underwater recording,  
The Swan, Isle of Mull



<https://canmore.org.uk/collection/1142607>

20<sup>th</sup> century Blockship,  
Scapa Flow, Orkney



**... as well as 2,747 obstructions**

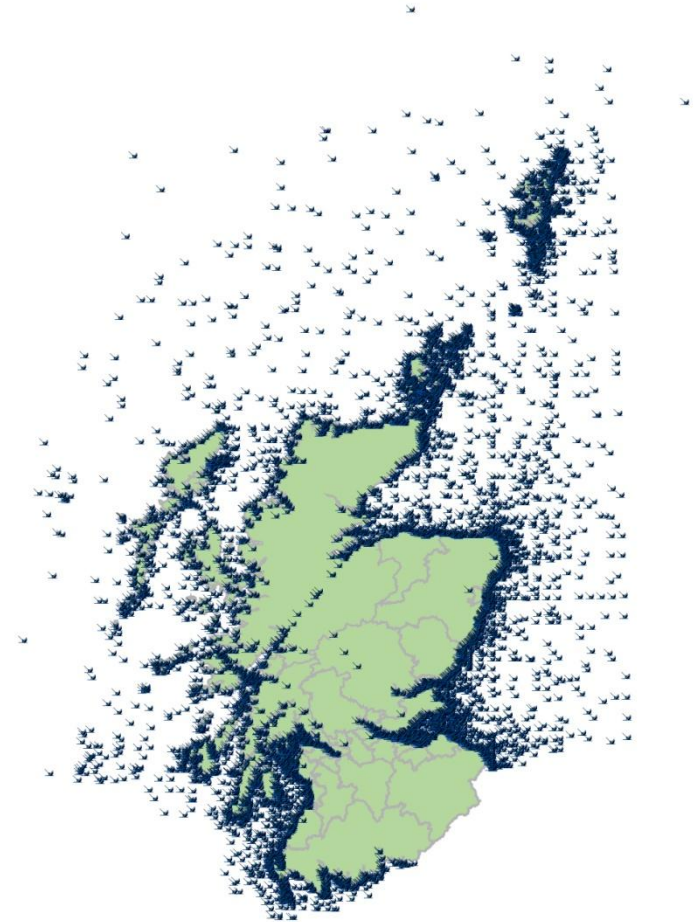
# as well as documented losses

There are **23,565 documented losses (casualties)** recorded in **Scottish waters**



<https://canmore.org.uk/collection/1234368>

Most losses are poorly located from documentary sources, positions given near notable landmarks such as '10 miles E of Aberdeen', or on the 'Bass Rock'



## visualised through a density map

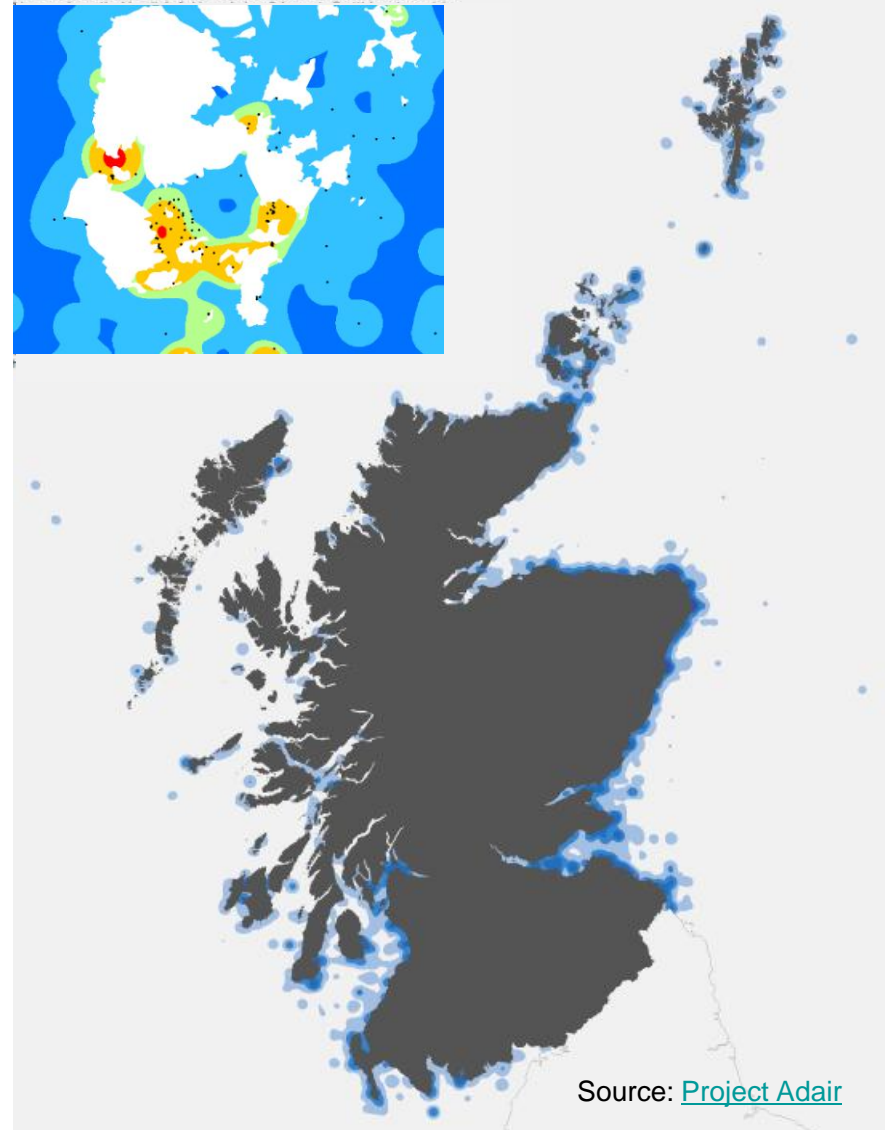
Due to the poor location of many of the documented losses, conventional distribution maps can give a false impression of accuracy

The density map provides a better impression of losses and potential for further discoveries.

The map gives a clear sense of the historical importance of particular ports and harbours, shipping routes and navigational hazards.

Main data source:

*Whittaker's Off Scotland record of maritime and aviation losses in Scottish Waters (1998 )*

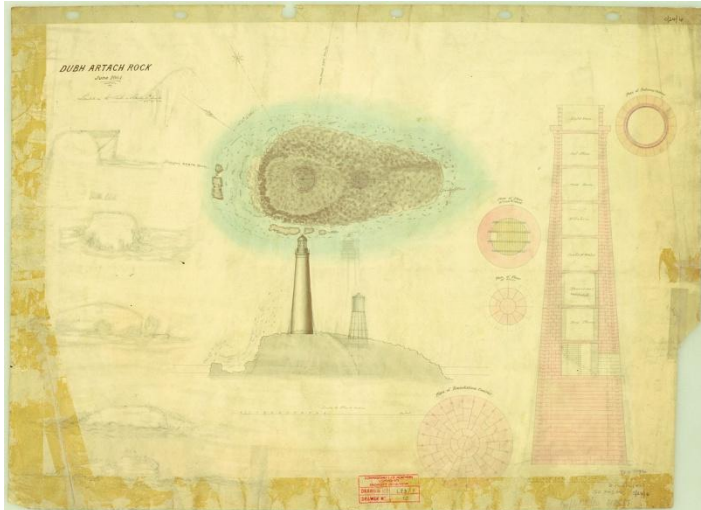


# Lighthouses



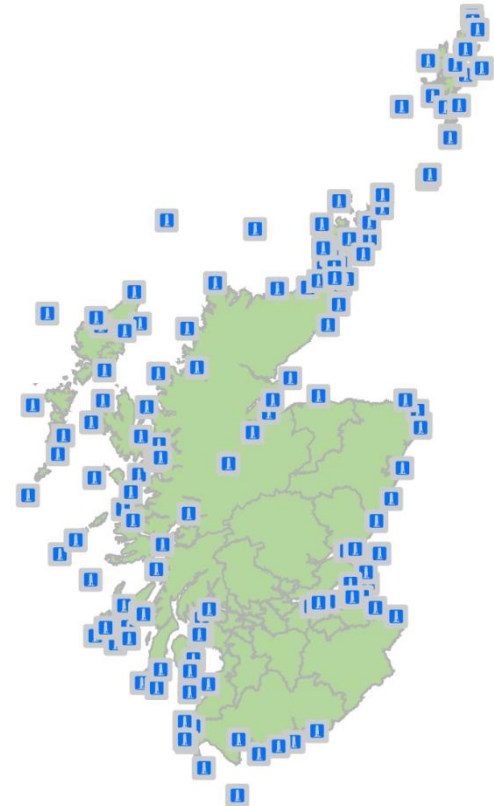
Eilean Glas Lighthouse, Scalpay

<https://canmore.org.uk/site/118898/>

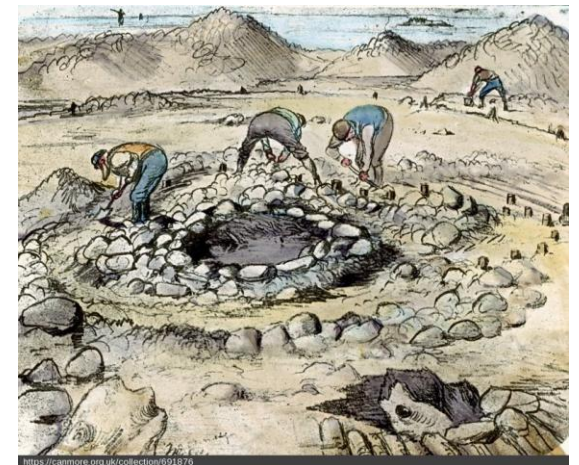
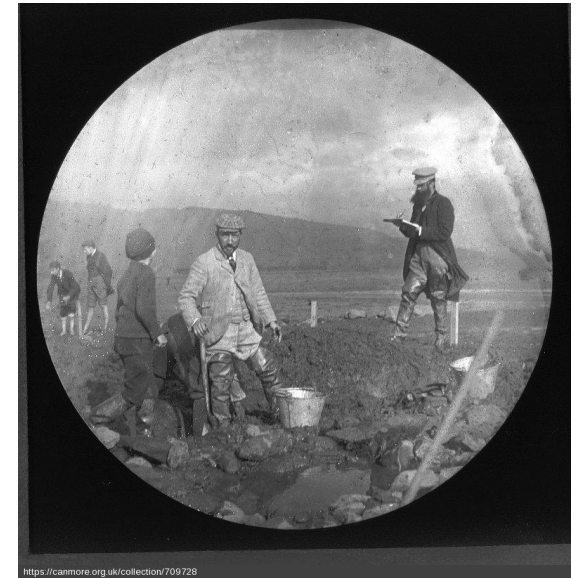


[Dun Artach](#) Lighthouse, Argyll, items from the collection of the Northern Lighthouse Board available for consultation at John Sinclair House, Edinburgh

Records for 211 lighthouses  
around Scotland's coast



But there is also a wealth of archaeology below high tide



Marine Crannog, Dumbuck, River Clyde, West Dunbartonshire  
<https://canmore.org.uk/site/43402/>

But there is also a wealth of archaeology below high tide



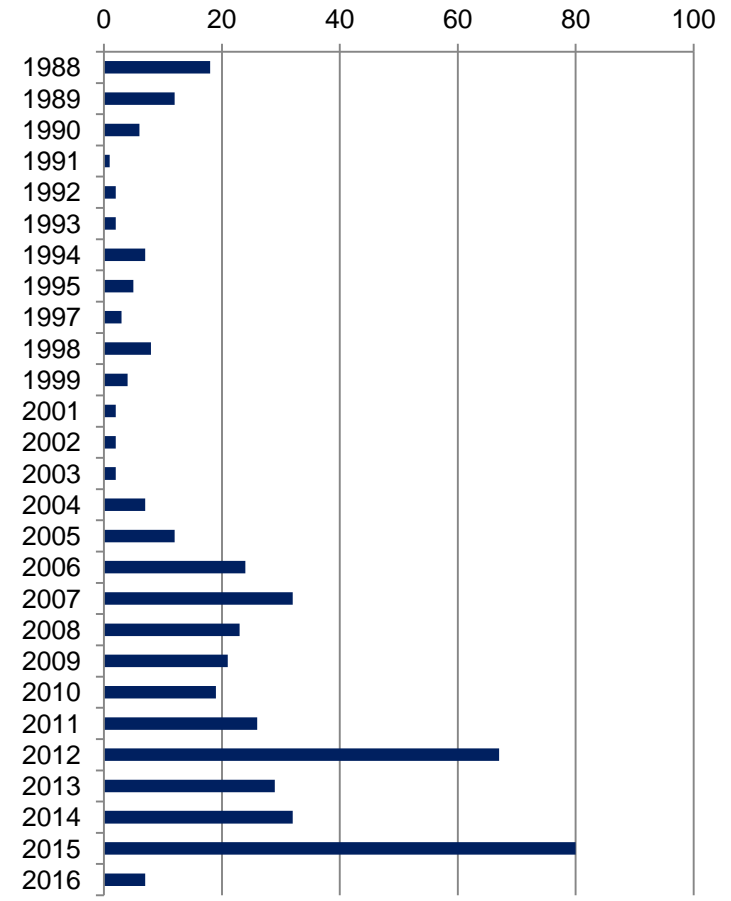
Kelp Grids by Castle Stalker, Loch Laich, Argyll

<https://canmore.org.uk/site/345756>

under reported in the record until relatively recently



## Fish Traps Date of entry in Canmore



Fish traps, Applecross Bay, Highland

<https://canmore.org.uk/site/315268>

# .. and the potential for submerged landscapes is yet to be fully realised

## NE Scotland, Orkney & Shetland

# Shifting sand dunes reveal large Bronze Age settlement

By Steven McKenzie  
BBC Scotland Highlands and Islands reporter

9 December 2015 | NE Scotland, Orkney & Shetland



Prof Jane Downes examines one of the house structures found at Tresness

Shifting sands have revealed a significant complex of Bronze Age buildings in Orkney.

**LIVE** Missing climbers & Scotland Live

24 minutes ago

Police are searching for two teenage girls who have gone missing from Stirling

### Top Stories

**No 10 claims MEPs' backing for EU deal**

Key figures in the European Parliament "made clear their support" for the UK's draft EU deal after talks with David Cameron, Downing Street says.

20 minutes ago

**Train controller 'caused German crash'**

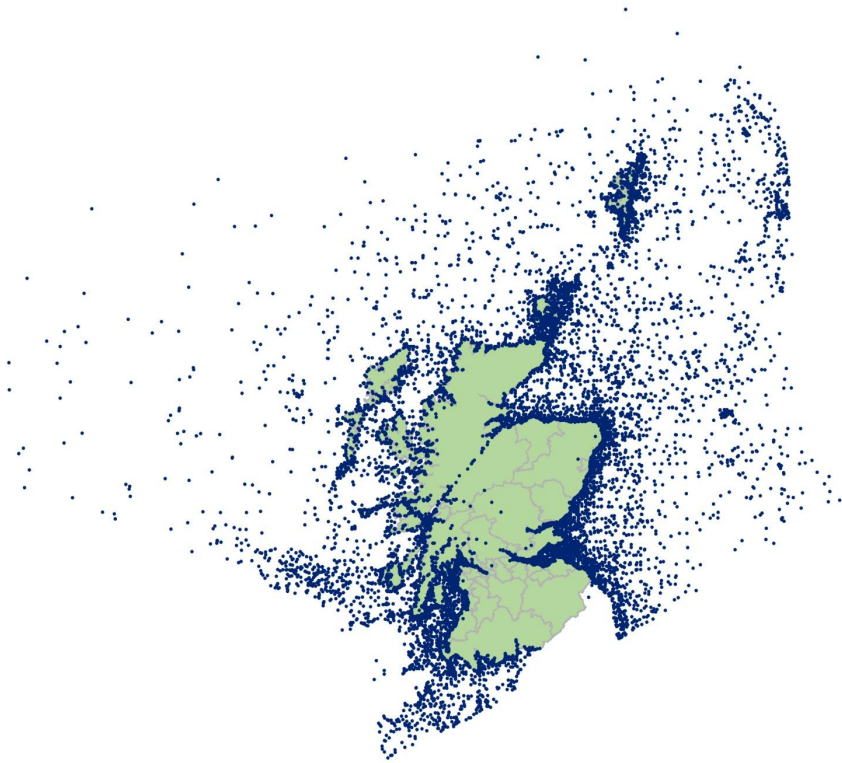
1 hour ago

**Footballer 'made girl out to be a liar'**

48 minutes ago

### Features

# Canmore is widely consulted



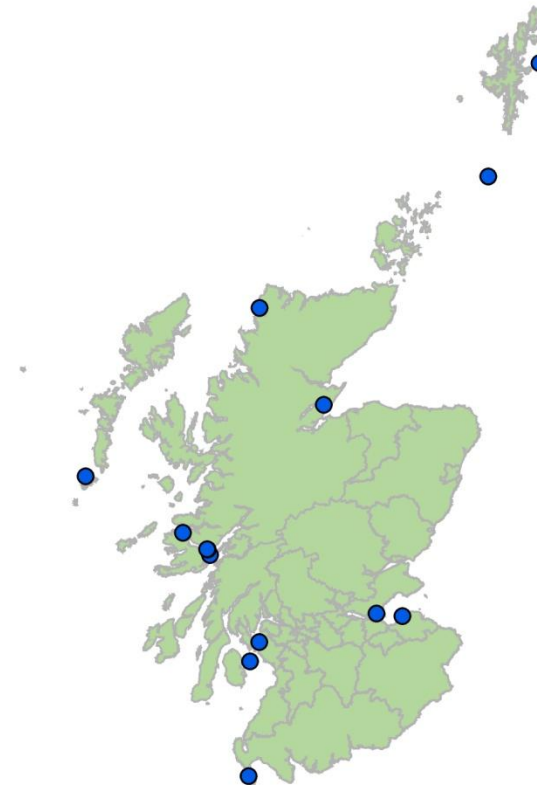
Distribution map of all maritime losses recorded in Canmore



Canmore records consulted during 2015-16

# Canmore is widely consulted

Page views	NMRSNAME
1849	SWAN: DUART POINT, SOUND OF MULL
1009	EL GRAN GRIFON: STROMS HEELOR, FAIR ISLE, NORTH SEA
958	[UNKNOWN] X-CRAFT: ABERLADY BAY, FIRTH OF FORTH
951	DARTMOUTH: EILEAN RUBHA AN RIDIRE, SOUND OF MULL
936	SAN JUAN DE SICILIA: TOBERMORY BAY, SOUND OF MULL
881	BLESSING OF BURNTISLAND: FIRTH OF FORTH, FIFE
834	HMS NATAL: NIGG BAY, CROMARTY FIRTH
783	HMS DASHER: FIRTH OF CLYDE
718	DE LIEFDE: MIO NESS, HOUSAY, OUT SKERRIES, NORTH SEA
695	THESIS: RUBHA AN RIDIRE, SOUND OF MULL
554	'KINLOCHBERVIE WRECK': BAGH POLL A' BHACAIN, NORTH MINCH
550	ADELAAR: CEANN AIRD GHREIN, BARRA, ATLANTIC
540	MARGARET REID: NORTH SEA
533	CONSOLIDATED CATALINA FLYING BOAT: FERRY POINT, GREAT CUMBRAE, FIRTH OF CLYDE
517	LADY HELEN STEWART: PORT LOGAN BAY, RHINNS OF GALLOWAY, NORTH CHANNEL



The top 15 Canmore records viewed in 2015-16

# Record enhancement: Discovering the Clyde



Pre 1850 Shipyards



Shipyards in 1864 (1<sup>st</sup> edition OS map)



Shipyards in 1938 (OS 25 inch map)



Shipyards in 2016

# Discovering the Clyde: timber ponds (1864 and 1938)



<https://canmore.org.uk/collection/1429434>



# Fieldwork plays a major role in creating and developing the record

Recording activity



Evidence


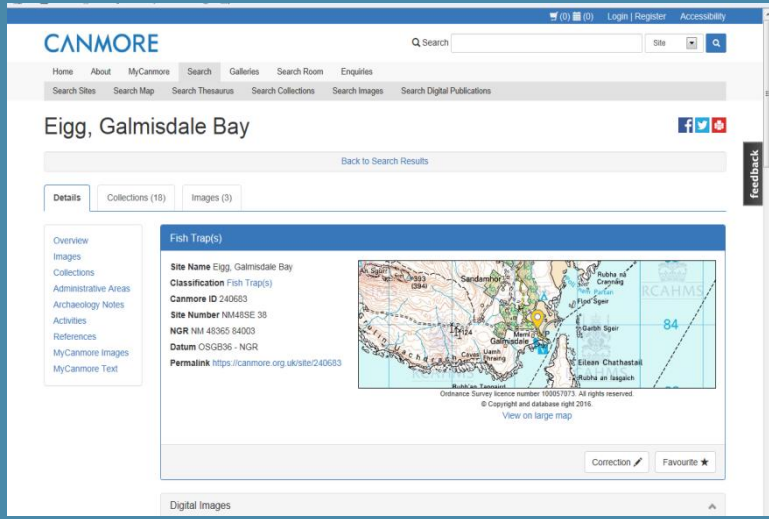


Monument



There are two fish traps, one contained within the other, on the SW side of Galmisdale Bay.....  
 Visited by RCAHMS (AGCH) 12 October 2001

<https://canmore.org.uk/event/580660>

The screenshot shows the Canmore website interface. The main heading is 'Eigg, Galmisdale Bay'. Below it, there are tabs for 'Details', 'Collections (18)', and 'Images (3)'. The 'Details' tab is active, showing a list of metadata for a 'Fish Trap(s)'. The metadata includes: Site Name (Eigg, Galmisdale Bay), Classification (Fish Trap(s)), Canmore ID (240683), Site Number (NMA85E 38), NGR (NM 48365 84003), Datum (OSGB36 - NGR), and a Permalink. To the right of the text is a map of the area with a yellow location pin. At the bottom of the details section, there are 'Correction' and 'Favourite' buttons.

<https://canmore.org.uk/site/240683>



<https://canmore.org.uk/collection/771510>

<https://canmore.org.uk/collection/771510>

Common addresses for aspects of the Record	
Monuments	<a href="https://canmore.org.uk/site/&lt;identifier&gt;">https://canmore.org.uk/site/&lt;identifier&gt;</a>
Collections	<a href="https://canmore.org.uk/collection/&lt;identifier&gt;">https://canmore.org.uk/collection/&lt;identifier&gt;</a>
Events	<a href="https://canmore.org.uk/event/&lt;identifier&gt;">https://canmore.org.uk/event/&lt;identifier&gt;</a>
Project	<a href="https://canmore.org.uk/project/&lt;identifier&gt;">https://canmore.org.uk/project/&lt;identifier&gt;</a>

## OASIS DATA COLLECTION FORM: Scotland

[List of Projects](#) | [Search Projects](#) | [Change your details](#) | [SMR/HER coverage](#) | [Log out](#)

### Printable version

**OASIS ID: orkneyre1-194708**

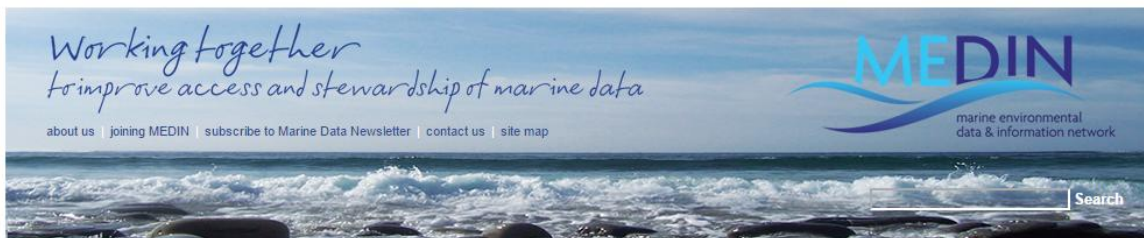
### Project details

Project name	Scapa Flow 2013 Marine Archaeology Survey
Short description of the project	The project consisted of remote sensing surveys and archaeological diving evaluations within the important naval harbour of Scapa Flow, Orkney commissioned by Historic Scotland. The investigations aimed to establish or confirm the identification, extent of survival, character and condition of around 25 known but mostly poorly recorded First and Second World War wreck sites and associated structures, and to ground-truth a limited sample of geophysical anomalies identified in previous studies. This work successfully documented the condition of several high priority sites within Scapa Flow and at the Churchill Barriers recording the nature and extent of the remains. The side scan and diver surveys of some of the foul ground areas around Gutter Sound identified the presence of a variety of wartime debris associated with the salvaging activities at Lyness. While it has not been possible to catalogue or provenance the artefacts identified in these areas within the scope of the project, it has successfully demonstrated that the wreckage at these and other salvage sites (the SMS Seydlitz and the SMS Bayern) is extensive. In addition, the project has successfully catalogued the blockships at the Churchill Barriers, correcting a number of errors reported by previous surveys pertaining to the nature and extent of the remains and documenting that in many instances the remains are more extensive than previously noted. This has resulted in the identification of a new wreck - Clio II and confirmation that the wreckage of the Rosewood is still present.
Project dates	Start: 29-08-2013 End: 19-03-2014
Previous/future work	Yes / Yes
Any associated project reference codes	293 - Contracting Unit No.
Any associated project reference codes	997684 - NMRS Event ID
Any associated project reference codes	102324 - NMRS UID
Any associated project reference codes	330876 - NMRS UID

[ORCA Scapa Flow 2013 Marine Archaeology Survey](#)

# harvested to create a project record in the MEDIN metadata portal

[http://portal.oceannet.org/search/full/catalogue/oasis.ac.uk\\_MEDIN\\_2.3\\_24643f43-0a63-3a7a-870f-648d5a0b2a7f.xml](http://portal.oceannet.org/search/full/catalogue/oasis.ac.uk_MEDIN_2.3_24643f43-0a63-3a7a-870f-648d5a0b2a7f.xml)



- home
- data discovery portal
- online data by theme
- data submission
- marine data standards
- library

**You are searching for...**  
data containing **archaeology**  
245 results returned in 0.76 seconds.  
[Return to your results](#) or [Edit this search](#).

**Download**  
The metadata is available for downloading in the following formats:  
• [MEDIN format](#) (CSV)  
• [MEDIN format](#) (XML version 2.3.1)  
• [Dublin Core format](#) (XML)  
• [GCMD DIF format](#) (XML version 9.4)  
This metadata complies with [INSPIRE](#) and [GEMINI 2](#) standards.

Add your own record [here](#).  
A [light version](#) of the portal is available for mobile and other limited browsers.

## Metadata: Scapa Flow 2013 Marine Archaeology Survey

**Overview**  
**Abstract:**  
The project consisted of remote sensing surveys and archaeological diving evaluations within the important naval harbour of Scapa Flow, Orkney commissioned by Historic Scotland. The investigations aimed to establish or confirm the identification, extent of survival, character and condition of around 25 known but mostly poorly recorded First and Second World War wreck sites and associated structures, and to ground-truth a limited sample of geophysical anomalies identified in previous studies. This work successfully documented the condition of several high priority sites within Scapa Flow and at the Churchill Barriers recording the nature and extent of the remains. The side scan and diver surveys of some of the foul ground areas around Gutter Sound identified the presence of a variety of wartime debris associated with the salvaging activities at Lyness. While it has not been possible to catalogue or provenance the artefacts identified in these areas within the scope of the project, it has successfully demonstrated that the wreckage at these and other salvage sites (the SMS Seydlitz and the SMS Bayern) is extensive. In addition, the project has successfully catalogued the blockships at the Churchill Barriers, correcting a number of errors reported by previous surveys pertaining to the nature and extent of the remains and documenting that in many instances the remains are more extensive than previously noted. This has resulted in the identification of a new wreck - Clio II and confirmation that the wreckage of the Rosewood is still present.

**Data holder:** Royal Commission on the Ancient and Historical Monuments of Scotland

Online resource present: ●

Use constraints:

- Restrictions Apply

**Details**  
Details for the metadata are as follows:

<b>Unique resource identifier</b> <a href="#">(info)</a>	orkneyre1-194708
<b>Abstract</b> <a href="#">(info)</a>	The project consisted of remote sensing surveys and archaeological diving evaluations within the important naval harbour
<b>Resource locator</b> <a href="#">(info)</a>	<a href="#">Digital Object Identifier</a> - The data related to this metadata record can be found at this URL.
<b>Keywords</b> <a href="#">(info)</a>	<a href="#">Marine Environmental Data and Information Network</a> , <a href="#">Archaeology</a>
<b>Geographic bounding</b>	The metadata covers the following areas (in the order West, South, East, North):

**Geographic Extent**

The metadata covers the following areas (in the order West, South, East, North):  
- 3.2474256° 58.931553° -3.2472255° 58.93175°



# The record is informed by community engagement projects



## SAMPHIRE 2015 Annual Report now online!

Posted on April 20, 2016 by JohnMcCarthy

We are delighted to announce that our 2015 report for the SAMPHIRE Project is now completed and has been published online! This is the last of the three annual project reports and covers our community engagement and diving fieldwork from all of last year. This year's report is crammed with exciting new discoveries, reported and investigated in partnership with local people along Scotland's west coast.



The 2015 programme focussed mainly on the south-west of Scotland and includes 3D surveys, coastal wrecks and several exciting new offshore shipwrecks from the 18th to 20th centuries. The report also describes the many conferences and talks where we have presented the project over the last year and the diving fieldwork. This year we have

- RECENT BLOG POSTS
- SAMPHIRE 2015 Annual Report now online!
  - Tyneside Sub-Aqua Club win BSAC Wreck award
  - Presenting SAMPHIRE at Marine Data day in Edinburgh

VA COASTAL & MARINE  
Find out more about VA Coastal & Marine's Edinburgh Office.

FOLLOW US ON TWITTER  
Follow @WAScotland

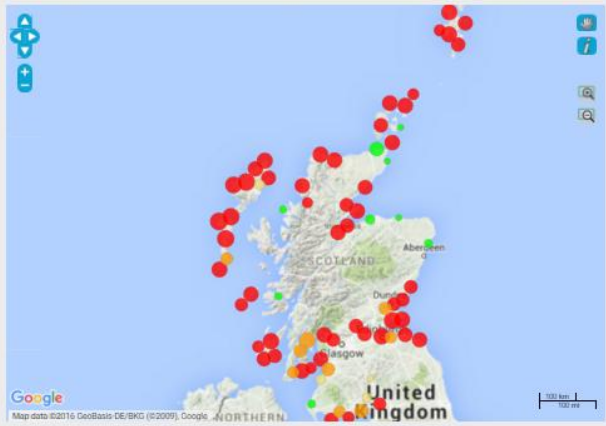
SCARF  
The current state of knowledge on Scotland's past has been brought together as the Scottish Archaeological Research Framework (ScARF), please visit ScARF to learn more and contribute.

CANMORE MAPPING  
CANMORE MAPPING is a map enabled query system for CANMORE. It allows you to search CANMORE, the NMR5 database, and to search for archaeological sites, monuments, buildings and maritime sites using a map.

HISTORIC SCOTLAND GUIDANCE FOR MARINE USERS  
Historic Scotland encourages public appreciation of, and involvement in the recording and



## Sites at Risk



- | Map markers  | Map controls                              |
|--|---|
| <span style="color: red;">●</span> high-priority site      | pan around the map                        |
| <span style="color: orange;">●</span> medium-priority site | select a site and see further information |
| <span style="color: yellow;">●</span> low-priority site    | zoom in; drag a box to define an area     |
| <span style="color: green;">●</span> newly-recorded site   | zoom out; drag a box to control extent    |

You can select a map view or an aerial photograph view - or both - in the Choose Map box.  
If you know of a site that is not recorded or have found a potential new site whilst exploring the map, you can [add a new site](#).

**Choose map**

- Google Physical
- Google Satellite
- Google Hybrid
- Bing Road Map
- Bing Satellite
- Bing Hybrid
- Overlays
- NLS OS 1900s

**Quick links**

Submit Records

© 2011 - 2016 The SCAPE Trust | Scottish Charity Number SC031678



# Canmore helps deliver The Historic Environment Strategy for Scotland

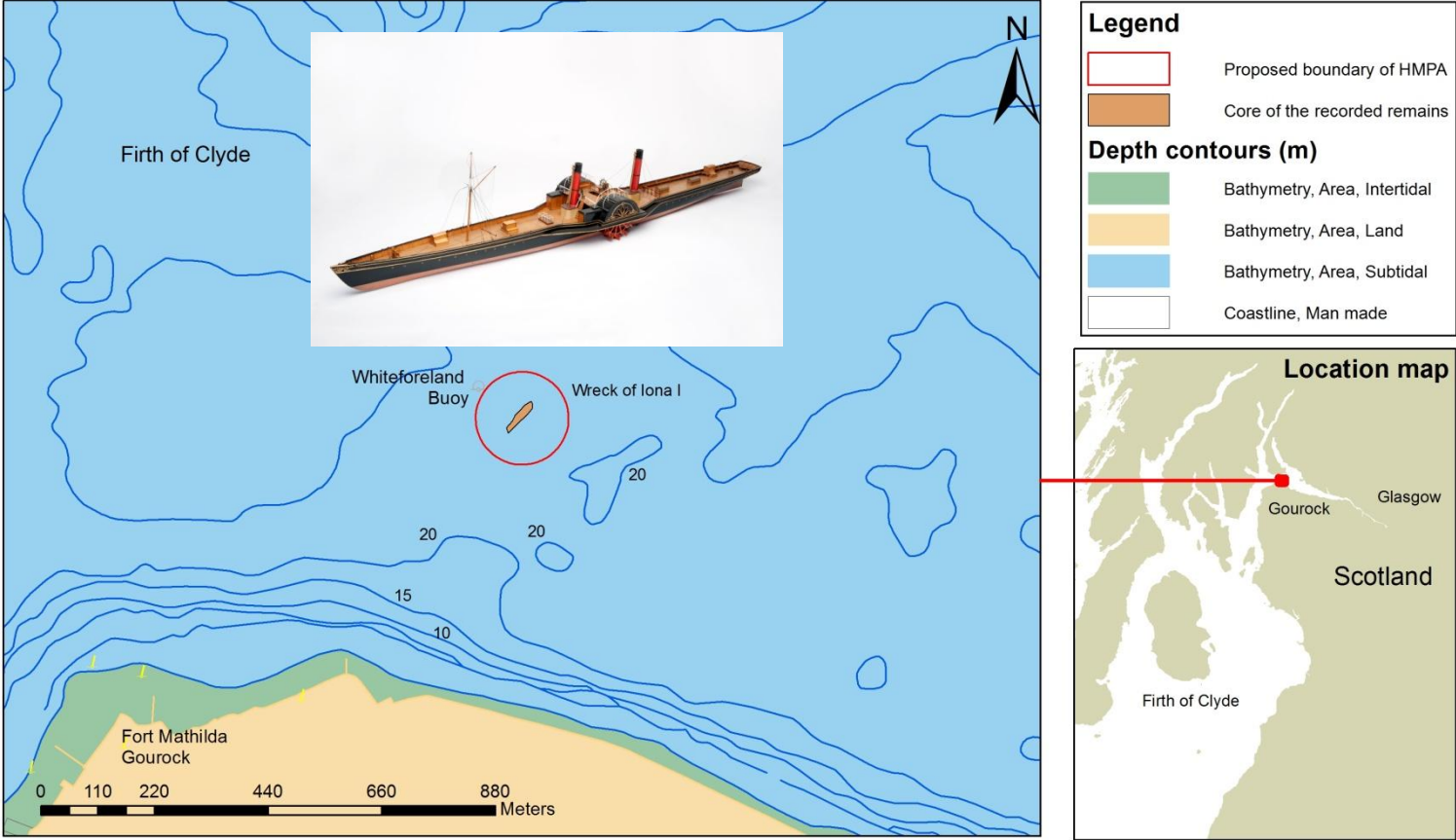


**OUR PLACE IN TIME**  
THE HISTORIC ENVIRONMENT  
STRATEGY FOR SCOTLAND

*Any decision made in relation to the care and management of the historic environment should be informed by the best available evidence, supported by robust data. This is at the heart of all good decision making and delivery, and is core to the international community's approach to managing the historic environment.*

*Our Place in Time,  
Cross-cutting Strategic Priorities*

## proposed Historic Marine Protected Area : Iona I



Boundary of the proposed Iona 1 Historic MPA: the area of sea within a distance of 90m of position latitude 55° 58'.076 north, longitude 04° 47'.194 west. Map projected in WGS84 (UTM Zone 30N). Basemap © British Crown and OceanWise, 2015. All rights reserved. License No. EK001 - 20140401. Not to be used for navigation.

Access to Oceanwise data helps HES provide advice to Marine Scotland on Historic Marine Protected Areas and Environmental Impact Assessments

# Historic Environment Scotland: Decisions portal

## HISTORIC ENVIRONMENT SCOTLAND DECISIONS PORTAL

This website uses cookies. [Find out more](#) OK

ⓘ Due to essential maintenance, you may experience intermittent access to services on this website. If the issue persists, please [contact us](#). ✕

- HOME
- DECISIONS
- DESIGNATIONS
- SPATIAL DOWNLOADS

### Quick Search

🔍 Search

For more detailed searches, consider using our [Decision Search](#) or [Designation Search](#).

#### Decisions



Browse and search for decisions on scheduling, listing and applications/decisions for scheduled monument consent.

#### Designations



Search and view records for listed buildings, scheduled monuments, inventory gardens and designed landscapes, inventory battlefields and historic marine protected areas.

Visit the Historic Scotland website for further information on [World Heritage Sites](#) 🔗

#### Spatial Downloads




Find out about designated heritage GIS Data datasets and access Atom feeds, web services and download data.

#### More About Us




Find out about places to visit, learning and resources, looking after our heritage and our news, including social media links, apps and more.


# Web Map and Feature Services published through data.gov.uk

 **DATA.GOV.UK** Beta  
Opening up Government

[Home](#) [Data](#) [Apps](#) [Interact](#)

Search for data...







[Datasets](#) [Map Search](#) [Data Requests](#) [Publishers](#) [Data API](#) [Organograms](#) [Site Analytics](#) [Reports](#) [Contracts](#)

[Home](#) / [Datasets](#) / [Historic Marine Protected Areas \(DATASET\)](#)

## Historic Marine Protected Areas (DATASET)


 

Published by Scottish Government Spatial Data Infrastructure. Licensed under **OGL** Open Government Licence & "This data is indicative only and the user should refer to the Historic Marine Protected Area site documentation for exact locations of individual boundary points and supplementary... [Read More](#)

Openness rating: ☆☆☆☆☆

**Responsible Party:** Historic Environment Scotland (pointOfContact, distributor)


Historic Marine Protected Areas 'Historic MPAs' are designated under Section 67 of the Marine Scotland Act 2010 to protect marine historic assets (e.g historic shipwrecks) of national importance within Scottish territorial waters.



**Environment**

The Scottish Government is committed to clean, healthy, safe, productive, biologically diverse marine and coastal environments, managed to meet the long-term needs of people and nature. This includes protecting and, where appropriate, enhancing our most important historic wrecks and other marine heritage sites in such a way that they can be valued and understood. One way Scottish Ministers can achieve this is by designating nationally important marine historic assets in Scottish territorial waters as Historic Marine Protected Areas under the Marine (Scotland) Act 2010.

The data shows the boundaries of all Historic Marine Protected Areas in Scotland. You should refer to the Historic Marine Protected Area site documentation for exact locations of individual boundary points and supplementary information.



DATASET EXTENT

Latitude:	61.4645° to 54.5329°
Longitude:	-7.7571° to -0.5320°

Contains Ordnance Survey data (c) Crown copyright and database right [2012]. Contains Royal Mail data (c) Royal Mail copyright and database right [2012]. Contains bathymetry data by GEBCO (c) Copyright [2012]. Contains data by Land & Property Services (Northern Ireland) (c) Crown copyright [2012].

DATA PACKAGE

100%

# Information is widely available online

**National Marine Plan Interactive**

Select Layers to Add

- Leisure and Recreation
- Historic Environment and Cultural Heritage
  - World Heritage Sites - January 2012
  - World Heritage Sites (HES WMS)
  - Historic Marine Protected Areas (MPAs) (HES WMS)
  - Historic Marine Protected Areas (HMPAs) (proposed) March 2016 consultation
  - Scheduled Monuments (HES WMS)
  - Listed Buildings (HES WMS)
  - Properties in Care (Coastal) (HES) - January 2012
  - Coastal Built Heritage (HES) - November 2015
  - Losses (HES) - November 2015
  - Wrecks (HES) - November 2015
  - Vessels designated as Controlled Sites under the Protection of Military Remains Act 1986 - December 2014
  - Vessels designated by name as Protected Places under the Protection of Military Remains Act 1986 - November 2014
  - National Trust for Scotland Property Boundaries - May 2015

Layer Control

- Wrecks (HES) - November 2015
- Historic Marine Protected Areas (MPAs) (HES WMS)
- Historic Marine Protected Areas (HMPAs) (proposed) March 2016 consult
- Base Layers

Scale: 1 : 216,671

Available Regions: Scotland

© Crown copyright and database right (2016). All rights reserved. Ordnance Survey 100024655, OceanWise EK001-201404001. Not to be used for Navigation. All data are covered by Crown Copyright and Privacy and Content Disclaimers. © OpenStreetMap contributors

**CANMORE**

The online catalogue to Scotland's archaeology, buildings, industrial and maritime heritage

Search Site Records

Search Collections

Search Our Thesaurus

366 Days of Architecture

## Canmore

**PastMap**

## PastMap

**Scotland's environment**

## SEWeb

Historic Environment datasets are available on [NMPI](#)



<https://canmore.org.uk/collection/1407389>

## Contact

**Peter McKeague**

[peter.mckeague@rcahms.gov.uk](mailto:peter.mckeague@rcahms.gov.uk)

**From summer 2016:**

[Peter.mckeague@hes.scot](mailto:Peter.mckeague@hes.scot)

Rectified vertical photo-mosaic of the '[Viking canal](#)' at Rubh' An Dunain, Skye quay, and nausts taken by aerial drone. (Edward Martin)